

Unique Series

BRICKCOM SPECIAL & REMARKABLE



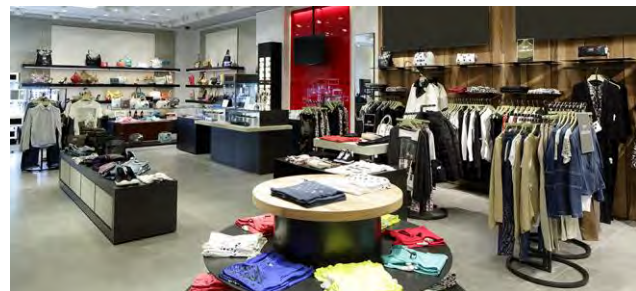
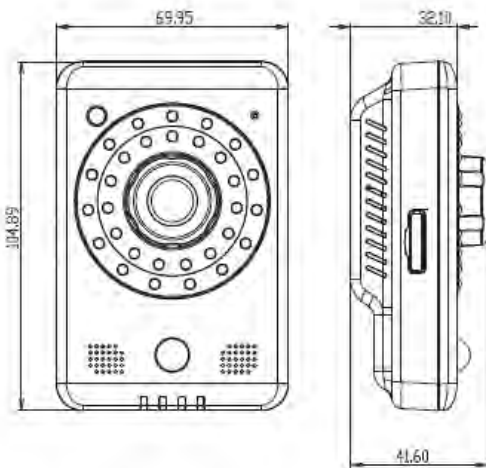
WMB-300Ap V6

3 Megapixel Day & Night Professional Wireless Mini Box

- 3MP Indoor Mini Box Camera
- Support 802.11a/b/g/n Dual Band Wireless Connectivity
- WPS Supported for Easy Wireless Network Setup
- 1 DI/DO for External Alarm and Sensor Device
- Two-way Audio / Built-in Mic and Speaker / PIR
- Wide Angle view with Board Lens
- Removable IR-cut Filter /Auto Light Sensor for Day and Night Function
- Built-in IR Illuminators up to 15 Meters
- i-Mode for Different Environments
- Micro SD/SDHC/SDXC slot



Dimensions



Retail



Office



Homecare

Camera	
Models	WMB-300Ap V6
Hardware System	Flash: 32 MB RAM: 256 MB
Image Sensor	Sensor Type : 1/3" CMOS Sensor Sensor Resolution : 3MP(2048x1536)
Lens	Lens Type: Board Lens Focal Length: f= 2.8 mm Iris: Fixed View Angle(H/V/D): Normal Mode:100°/56°/114°
Local Storage	Built-in Micro SD/SDHC/SDXC Max.128G Memory Card Slot
Day & Night ICR	Triggered by Light sensor, Scheduling, Digital Input
Minimum Illumination	0 lux (IR ON, B/W) 0.003 lux (IR OFF, B/W) 0.005 lux (Color)
IR Illuminators	Built -in IR Illuminators Distance: 15 meters IR LED: 30pcs
Video	
Video Image Compression	H.264 / MPEG4 / MJPEG
Video Setting	i-Mode Image Management: Smart Auto/ Indoor 60Hz/ Indoor 50Hz/ Outdoor/ Car License Plate / Schedule/ Digital Input/ Entrance & Elevator / Always / Auto Exposure Control/Gain/ White Balance Control Manual Exposure Control: 1/120000~1s Manual Gain Control: 1 ~ 48
Image Resolution	3MP (2304 x 1296) / 30fps 2MP (1920 x 1080) / 30fps
WDR	D-WDR
Events and Alarm Management	
Events	Motion Detection/ Schedule/ Audio Detection/ Digital Input
Alarm	Stream/Snapshot to FTP/Email/Samba/SD-Card HTTP/Email Notification/ Digital Output

Audio	
Audio Streaming	2-way Audio Support
Audio Compression	G.711, AMR
Audio Input/ Output	Built-in MIC & Speaker
General	
Communication	Ethernet : one 10/100Mbps RJ-45 Supported Protocols : TCP/IP, UDP, ICMP, DHCP, NTP, DNS, DDNS, SMTP, FTP, HTTP, HTTPS, Samba, PPPoE, UPnP, RTP, RTSP, RTCP, IPv4, IPv6, 802.1x
Power Input	DC12V/ POE af
Interface & Buttons	Built-in Microphone & Speaker Ethernet RJ45 Socket Power Connector DIDO Terminal I/O Connector Reset Button WPS Button(802.11 a/b/g/n) Privacy Button Micro SD/SDHC/SDXC slot
Power Input	DC12V/ POE af
Max. Power Consumption	6 watts
Environment	Start Temperature -20°C ~ 50°C (-4°F ~122°F) Operating Temperature -40°C ~ 50°C (-40°F ~122°F) Operating Humidity : 10% ~ 90%
Dimension	163 (L) X163 (W) X 125 (H) mm
Weight	477g
Certification	FCC, CE
Warranty	Limited 36 months warranty

Camera Accessories Options



CI-803C
Camera Stand (Shipped with camera)



WRT-750N
Dual Band Wireless N Router